



# Waxman Ceramics



# LITOS

Glazed Porcelain Tiles

Anti-Slip available



tile  
collection

COLOURS



Artico  
60x120cm Rectified

- Natural (5)
- Anti-Slip (5) (A)



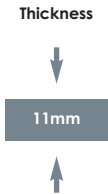
Sabana  
60x120cm Rectified

- Natural (5)
- Anti-Slip (5) (A)



Siberia  
60x120cm Rectified

- Natural (5)
- Anti-Slip (5) (A)



(A) = Anti-Slip

Slip Resistance		
	R12	+36
	C	+40



COLOURS



Artico  
100x100cm Rectified

- Natural5
- Anti-Slip5A



Sabana  
100x100cm Rectified

- Natural5
- Anti-Slip5A

Thickness

↓

11mm

↑

A = Anti-Slip

Slip Resistance		
	R12	+36
	C	+40

COLOURS



Siberia  
100x100cm Rectified

- Natural5
- Anti-Slip5A

Thickness

↓

11mm

↑

A = Anti-Slip

Slip Resistance		
	R12	+36
	C	+40



COLOURS



Artico  
33x66.5cm

Natural 5  
Anti-Slip 5 A



Sabana  
33x66.5cm

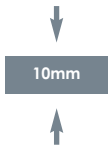
Natural 5  
Anti-Slip 5 A



Siberia  
33x66.5cm

Natural 5  
Anti-Slip 5 A

Thickness



A = Anti-Slip		
Slip Resistance		
	R12	+36
	C	+40

SPECIAL PIECES



Square Step Edge  
33x120cm



30mm 12mm



Overflow Edge  
28x66.5cm



17mm 30mm



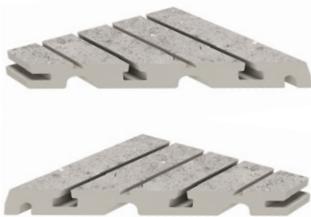
Overflow Corner  
33x33cm



Grating  
24.5x24.5cm



30mm



Grating Corner  
24.5x33cm  
(Set of 2 Pieces)



Skirting  
9x40cm



External Cove  
33x3cm



External Cap  
3x3cm

= Anti-Slip

Slip Resistance		
	R12	+36
	C	+40



Internal Cove  
33x4cm



Internal Cap  
4x4cm





Artico - 33x66.5cm / Artico - 60x120cm / Artico Overflow Edge - 28x66.5cm / Artico Grating - 24.5x24.5cm  
Artico Internal Cove - 33x4cm / Artico Internal Cap - 4x4cm





Sabana - 33x66.5cm / Sabana Overflow Edge - 28x66.5cm / Sabana Grating - 24.5x24.5cm  
Sabana Square Step Edge - 33x120cm





Siberia - 100x100cm





Siberia - 100x100cm / Siberia Square Step Edge - 33x120cm



# SPECIFICATION & PACKING

## Glazed Porcelain Tiles

Suitability	Thickness	Walls		Floors		Frostproof	Colour Variation
		Internal	External	Internal	External		
60x120cm Rectified	11mm	✓	✓	✓	✓	Yes	V2
100x100cm Rectified	11mm	✓	✓	✓	✓	Yes	V2
33x66.5cm	10mm	✓	✓	✓	✓	Yes	V2

Packing	Pcs / ctn	M <sup>2</sup> / Ctn	Kg / Ctn	Ctns / Pallet	M <sup>2</sup> / Pallet
60x120cm Rectified	2	1.44	36.50	27	38.88
100x100cm Rectified	1	1.00	25.00	48	48
33x66.5cm	5	1.11	25.38	40	44.40



# Waxman Ceramics

---

**Head Office**                      **01422 311331**

Grove Mills  
Elland  
West Yorkshire  
HX5 9DZ  
England

Email            [info@waxmanceramics.co.uk](mailto:info@waxmanceramics.co.uk)  
Web              [www.waxmanceramics.co.uk](http://www.waxmanceramics.co.uk)

**Waxman Ceramics Ltd - Part of the Waxman Group**

The information contained within this document is, to the best of our knowledge, accurate at the time of production.  
We reserve the right to modify this document at any time.  
Whilst every attempt has been made to accurately reproduce colours and textures, images used within this document are only intended as a guide.  
Please refer to actual product samples before specifying or ordering.

REF: 19/11